

FONTANA GENEVA 360 ROTATION PULL OUT SPRAYER
SENSOR TOUCH KITCHEN FAUCET IN BLACK AND
GOLD FINISH



PRIOR TO INSTALLATION

Please read installation instructions below. All plumbing should be installed in accordance with applicable building codes and regulations.

Unpack and inspect the items for any shipping damages. If you find damages, do not install.

All products must be installed by a professional and certified plumber otherwise warranty may be voided.

POSSIBLE TOOLS REQUIRED*



Plumbers Tape



Tape Measure



Level



Adjustable Wrench



Hex Wrench



Thread Sealant



Drill



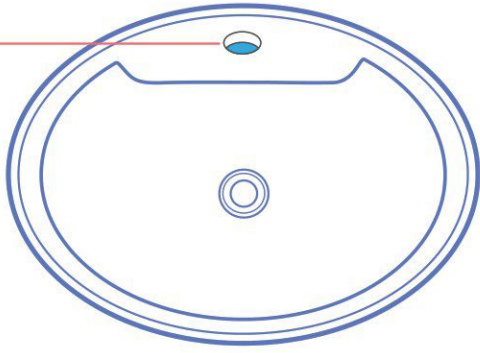
Pencil or Marker



Screwdriver

*not included

Hole Size Chart

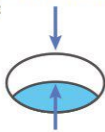


Pre-drilled hole size requirements:



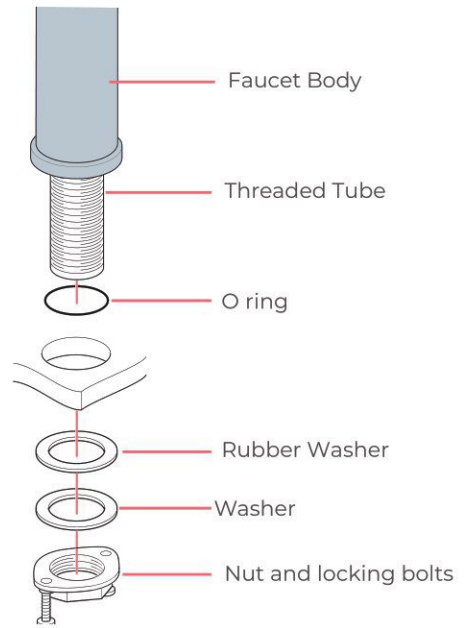
Min: 1.26"/32mm - Max: 1.38"/35mm

Max counter top thickness without deck plate:



1.38"/35mm

Faucet Deck Mount Installation



Installation steps



1

Attached water intake lines to the Faucet Assembly, then insert it to the hole .



2

Screw the metal nut to the faucet under the sink.



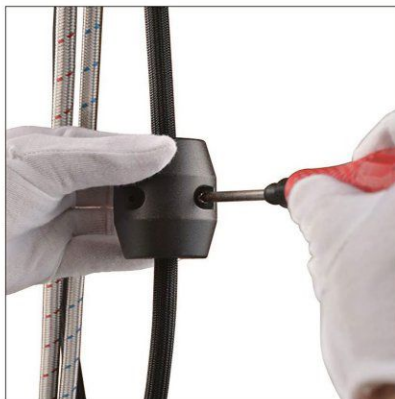
3

Notice: plastic washer is on the top, then the metal collar, the metal nut at the end .



4

Tighten the screws.



5

Clasp weight to the label place of the pull out hose.



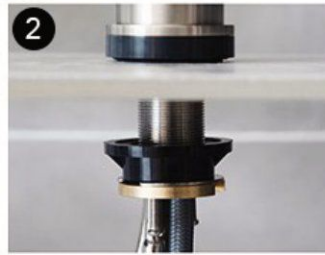
6

DIY installations finished, then test the faucet

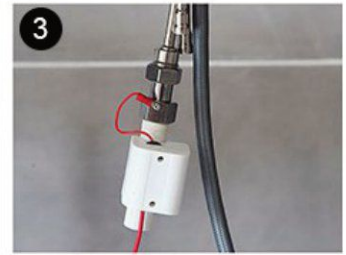
Touch Sensor Installations



1 First fix the anti-static rubber ring at the bottom of the faucet



2 On the back of the basin
1.anti-static rubber ring
2.iron washers
3.Finally copper fasteners



3 At the faucet inlet connect the touch switch



4 On the drawing tube,
1. Attach the apron 2. Adapter

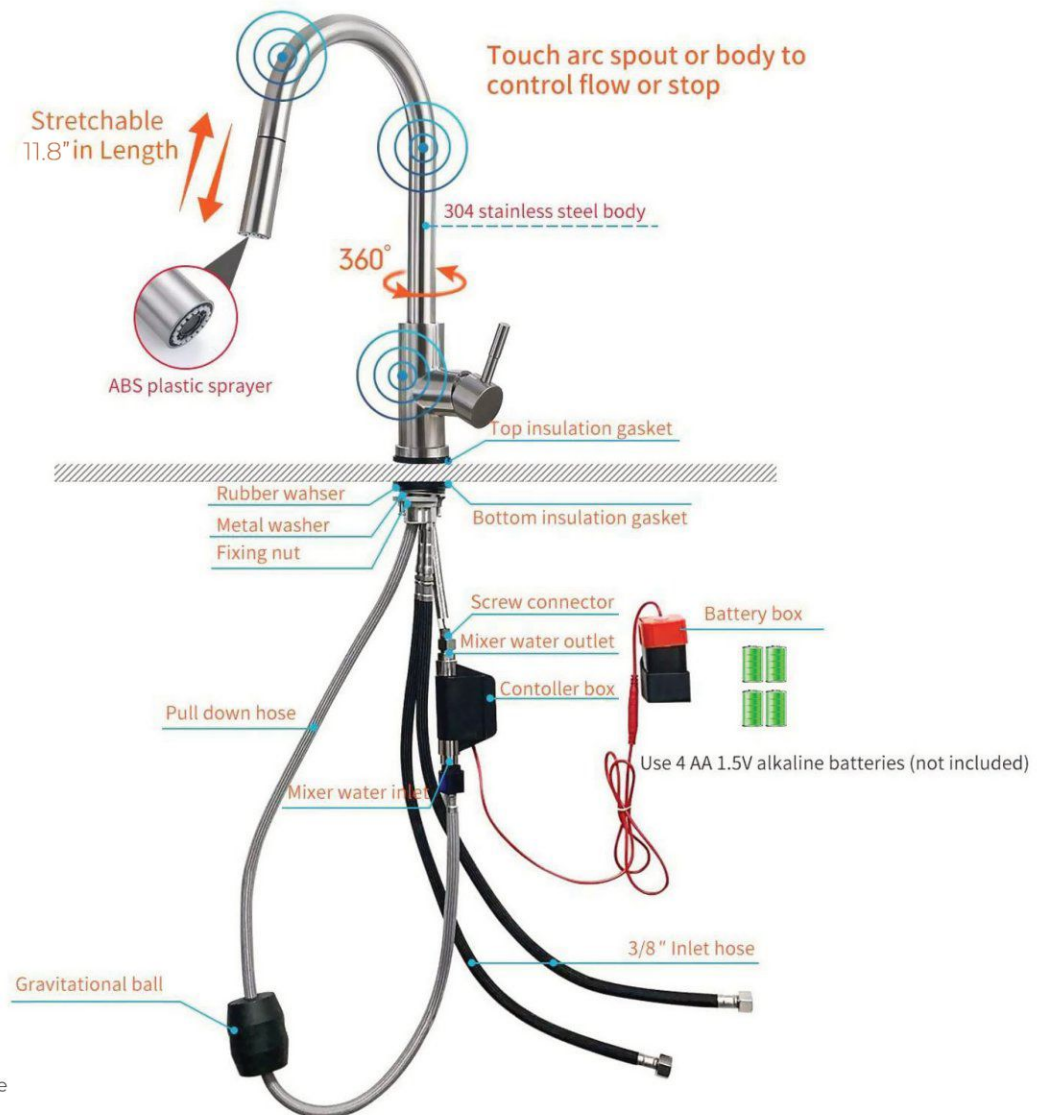


5 The picture above shows the installed touch sensor



6 Install a universal battery for the battery case and connect the switch device

Installations Overview



Product shown is only for installation display purpose